

Rosários 4[®]

214

Autumn . Winter

Balada Cardigan



CREATED AND KNITTED BY
FILIPA CARNEIRO

PHOTOGRAPHED BY:
BRUNO MENDES

BALADA



80% Wool



20%
Silk

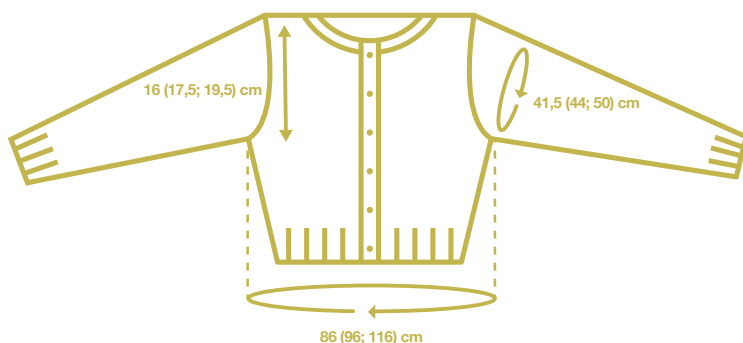


100% Natural
Fibres

Balada Cardigan

214

Autumn . Winter



YARN

7 (8, 9) balls of Rosários 4 Balada yarn, colour 13 (50g/140m).

NEEDLES

3,0 mm and 3,5 mm circular needles (if necessary, adjust the needle size to match the gauge).

NOTIONS

Stitch markers, tapestry needle, waste yarn, 8 buttons.

GAUGE

24 sts and 32 rows - 10x10 cm in stockinette stitch with 3,5 mm, washed and blocked (it's important to wash and block your swatch in order to get the correct gauge).

SIZES

S, M, L.

FINISHED MEASUREMENTS

86 (96, 116) cm finished bust circumference (refer to schematic for detailed measurements).

This cardigan is knitted seamlessly from the bottom up. The body is knitted in one piece to the armholes. Then the fronts and back are separated and knitted flat to shoulders. Shoulders are joined with 3-needle bind off and the sleeves are knitted from picked up stitches in the armhole, down to the cuffs. The neck and button bands are worked from picked up stitches.

INSTRUCTIONS

BODY

Tubular cast on:

With 3 mm needles, cast on 86 (104, 128) sts in waste yarn. With working yarn work the following rows:

Row 1: purl.

Row 2: knit.

Repeat rows 1 - 2, once more.

Row 5: P1, M11, *pick up 1 st from provisional cast on and purl, P1, repeat from * to end of row - total of 171 (207, 255) sts.

Work the hem in broken rib stitch:

Row 1 (RS): K2, *P1, K1, repeat from * to last st, K1.

Row 2 (WS): purl.

Repeat rows 1 - 2, 10 more times (22 rows in total).

Change to 3,5 mm needle and work the body with the lace fronts:

Row 1 (RS): K2, pm, [work chart A - row 1], pm, K1, pm, K 93 (105, 129), pm, K1, pm, [work chart B - row 1], pm, K2.

Row 2 (WS): P2, slm, [work chart B - row 2], slm, P1, slm, P to marker, slm, 1L, slm, [work chart A - row 2], slm, P2.

Row 3 (RS): K2, slm, [work chart A], slm, K1, slm, K to marker, slm, K1, slm, [work chart B], slm, K2.

Row 4 (WS): P2, slm, [work chart B], slm, P1, slm, P to marker, slm, P1, slm, [work chart A], slm, P2.

Repeat rows 3 - 4, 6 more times. The body of the cardigan is knitted in the established pattern - lace in both fronts (following charts A and B) and the back in stockinette stitch.

Start to work increases for the chest:

Increase row (RS): K2, slm, [work chart A], slm, K to marker, M1r, slm, K1, M1l, K to 1 st before marker, M1r, K1, slm, M1l, K to marker, slm, [work chart B], slm, K2.

Work 7 rows in established pattern and repeat the increase row.

Repeat **increase row** every 8 rows, 3 more times.

[43 (55, 67) sts each front; 101 (113, 137) sts in back]

Work 10 (22, 34) more rows, in established pattern. Be sure to complete:

- size S: row 11 of the 3rd repeat of the lace charts;
- size M: row 23 of the 3rd repeat of the lace charts;
- size L: row 11 of the 4th repeat of the lace charts.

Separating body and sleeves (WS) - P2, [work chart B - row 12 (24, 12)], P1, bind of 3 (4, 4) sts, remove marker, bind of 3 (4, 4) sts, P to marker, bind of 3 (4, 4) sts, remove marker, bind of 3 (4, 4) sts, P1, [work chart A - row 12 (24, 12)], 2L.

[40 (51, 63) sts each front; 95 (105, 129) sts in back]

Slip back and left front sts to waste yarn and leave on hold while working right front.



214

Autumn . Winter

RIGHT FRONT

Work the armhole decreases and neckline shaping, following **charts C (D, E)**.

Shape shoulder with short rows:

Note: when working the German short-rows, be careful to work all DS as single stitches (*find a complete description of the method on the last page*)

SIZE S

Row 53: K2, K2tog, yo, (K, yo, SSK) x 2, K, k2tog, yo, K4, turn.

Row 54: DS, P16.

Row 55: K, K2tog, yo, K3, yo, SSK, K, yo, CDD, yo, K2, turn.

Row 56: DS, P13.

Row 57: K2, K2tog, yo, K, (yo, SSK) x 2, K2, turn.

Row 58: DS, P10.

Row 59: K8, turn.

Row 60: DS, P7.

Row 61: knit.

Row 62: purl.

SIZE M

Row 57: K2, yo, SSK, K3, (K2tog, yo) x 2, K, (yo, SSK) x 2, K5, turn.

Row 58: DS, P20.

Row 59: K3, yo, SSK, K, (K2tog, yo) x 2, K3, yo, SSK, K2, turn.

Row 60: DS, P16.

Row 61: K2, yo, K, k2tog, K, SSK, K, yo, K4, turn.

Row 62: DS, P12.

Row 63: K3, yo, K2tog, K, SSK, yo, K, turn.

Row 64: DS, P8.

Row 65: knit.

Row 66: purl.

SIZE L

Row 63: K3, yo, K2, K2tog, K, SSK, K2, yo, K3, yo, K2, K2tog, K, SSK, yo, K3, turn.

Row 64: DS, P24.

Row 65: K2, (K2tog, yo, K) x 2, (yo, SSK, K) x 2, K2tog, yo, K5, turn.

Row 66: DS, P20.

Row 67: (K, K2tog, yo) x 2, K3, yo, SSK, K6, turn.

Row 68: DS, P16.

Row 69: K3, K2tog, yo, K8, turn.

Row 70: DS, P12.

Row 71: knit.

Row 72: purl.

Slip shoulder sts to waste yarn and leave on hold while knitting the left front and the back.

LEFT FRONT

Place left front hold sts back on the needles and work the armhole decreases and neckline shaping following **charts F (G, H)**.

Shape shoulder with short rows:

Note: when working the German short-rows, be careful to work all DS as single stitches (*find a complete description of the method on last page*)

SIZE S

Row 53: K7, yo, SSK, (K, K2tog, yo) x 2, K, yo, SSK, K2.

Row 54: P17, turn.

Row 55: DS, K4, yo, CDD, yo, K, K2tog, yo, K3, yo, SSK, K.

Row 56: P14, turn.

Row 57: DS, K4, (K2tog, yo) x 2, K, yo, SSK, K2.

Row 58: P11, turn.

Row 59: DS, K10.

Row 60: P8, turn.

Row 61: DS, K7.

Row 62: purl.

SIZE M

Row 57: K8, (K2tog, yo) x 2, K, (yo, SSK) x 2, K3, K2tog, yo, K2.

Row 58: P21, turn.

Row 59: DS, K3, (K2tog, yo) x 2, K3, (yo, SSK) x 2, K, k2tog, yo, K3.

Row 60: P17, turn.

Row 61: DS, K7, yo, K, K2tog, K, SSK, K, yo, K2.

Row 62: P13, turn.

Row 63: DS, K4, yo, K2tog, K, SSK, yo, K3.

Row 64: P9, turn.

Row 65: DS, K8.

Row 66: purl.

SIZE L

Row 63: K6, yo, K2tog, K, SSK, K2, yo, K3, yo, K2, K2tog, K, SSK, K2, yo, K3.

Row 64: P25, turn.

Row 65: DS, K8, yo, SSK, (K, K2tog, yo) x 2, (K, yo, SSK) x 2, K2.

Row 66: P21, turn.

Row 67: DS, K9, K2tog, yo, K3, (yo, SSK, K) x 2.

Row 68: P17, turn.

Row 69: DS, K11, yo, SSK, K3.

Row 70: P13, turn.

Row 71: DS, K12.

Row 72: purl.

Slip shoulder sts to waste yarn and leave on hold while knitting the back.



PURE NEW WOOL



ISO 9001

40
ANOS

214

Autumn . Winter

BACK

Place the 95 (105, 129) sts that were on hold for the back into the needles and work.

Decrease every row:

Row 1 (RS): K2, SSK, K to last 4 sts, K2tog, K2.

Row 2 (WS): P2, P2tog, P to last 4 sts, P2tog tbl, K2.

Size L: repeat rows 1 - 2, once more.

Decrease every other row:

Row 1 (RS): K2, SSK, K to last 4 sts, K2tog, K2.

Row 2 (WS): purl.

Repeat rows 1 - 2, 2 (4, 6) more times. [85 (91, 107) sts]

Work 44 more rows in stockinette stitch.

Shape shoulder with short rows:

Row 1 (RS): K to last 2 (3, 4) sts, turn.

Row 2 (WS): DS, P to last 2 (3, 4) sts, turn.

Row 3 (RS): DS, K to 3 (4, 4) sts before DS, turn.

Row 4 (WS): DS, P to 3 (4, 4) sts before DS, turn.

Repeat rows 3 - 4, 2 more times (4DS in each side).

Note: when working the German short-rows, be careful to work all DS as single stitches (*find a complete description of the method on the last page*)

Row 9 (RS): knit.

Row 10 (WS): purl.

Join right shoulder with 3 needle bind off: slip 20 (24, 28) sts on hold from right front to spare needle; from the wrong side, bind off right front stitches together with matching back stitches.

Join left shoulder with 3 needle bind off: slip 20 (24, 28) sts on hold from left front to spare needle; from the wrong side, bind off left front stitches together with matching back stitches.

Place the remaining 45 (43, 51) back sts on waste yarn and leave on hold for the neckband.

SLEEVES

With 3 mm needle and the right side facing, start at the shoulder seam and pick up and knit 35 (38, 42) sts down armhole + pick up and knit 3 (4, 4) sts over the bound of sts in the underarm; place marker; pick up and knit 3 (4, 4) sts over the other half of the bound of sts in underarm; pick up and knit 35 (38, 42) sts up along the other side of the armhole - total of 76 (84, 92) sts.

Change to 3,5 mm needle and work in short rows to shape sleeve cap:

Note: when working the German short-rows, be careful to work all DS as single stitches (*find a complete description of the method on last page*)

Row 1 (RS): K12 (14, 16), turn.

Row 2 (WS): DS, P23 (27, 31), turn.

Row 3 (RS): DS, K to DS, K_{DS}, K1, turn.

Row 4 (WS): DS, P to DS, P_{DS}, P1, turn.

Repeat rows 3 - 4, 17 (19, 21) more times.

Following row: DS, K to DS, KDS, K to marker.

Join to knit in the round, the marker is the new beginning of round:

Rnd 1 (RS): K to DS, KDS, K to end.

Knit 16 (18, 20) rnds.

Start decreases:

Decrease rnd (RS): K1, SSK, K to last 3 sts, K2tog, K1.

Knit 5 (7, 7) rnds.

Repeat decrease rnd every 6 (8, 8) rnds, 11 (12, 13) more times. [56 (58, 64) sts]

Continue knitting every rnd until the sleeve measures 41 cm long from the armhole (*or 5 cm less than desired length*). Change to 3 mm needle and start broken rib cuff:

Rnd 1 (RS): *P1, K1, repeat from * to end of rnd.

Rnd 2 (RS): knit.

Repeat rnds 1 - 2, 9 more times.

Bind off all sts in ribbing pattern.



PURE NEW WOOL



ISO 9001

40 ANOS

Rua das Grutas, 13 - Apartado 123, 2485-059 Mira de Aire - Portugal
Tel. +351 244 447 300 - Fax +351 244 447 309
info@rosarios4.com www.rosarios4.com

214

Autumn . Winter

NECKBAND

With 3 mm needle and right side facing: pick up and knit 12 (14, 18) sts over the bound off sts of the right front neckline + 15 (17, 17) sts along right front neckline edge (*approx 2 sts every 3 rows*); place the 45 (43, 51) hold sts back to the needle and knit; pick up and knit 15 (17, 17) sts along left front neckline edge (*approx 2 sts every 3 rows*) + 12 (14, 18) sts over the bound off sts of the left front neckline - total of 99 (105, 121) sts.

Work in broken rib stitch:

Row 1 (WS): P2, *K1, P1, repeat from * to last st, P1.

Row 2 (RS): knit.

Repeat rows 1 - 2, 2 more times and work row 1 once. Bind off all stitches in ribbing pattern.

BUTTONBANDS**Left Front Buttonband**

With 3 mm needles and right side facing, pick up and knit 91 (105, 115) sts along left front edge - pick up approx 3 sts for every 4 rows.

Work broken rib stitch:

Row 1 (WS): P2, *K1, P1, repeat from * to last st, P1.

Row 2 (RS): knit.

Repeat rows 1 - 2, 3 more times and work row 1 once. Bind off all stitches in ribbing pattern.

Right Front Buttonband

With 3 mm needle and right side facing, pick up and knit 91 (105, 115) sts along right front edge in the same way as for left front button band.

Work broken rib stitch:

Row 1 (WS): P2, *K1, P1, repeat from * to last st, P1.

Row 2 (RS): knit.

Row 3 (WS): work 3 (3, 4) sts in established ribbing pattern, bind off 2 sts purlwise, [work 10 (12, 13) sts in established ribbing pattern, bind off 2 sts purlwise] x 7 times, work 2 (2, 4) sts in established ribbing pattern

Row 4 (RS): K 2 (2, 4), cast on 2 sts, [K 10 (12, 13), cast on 2 sts] x 7 times, K 3 (3, 4).

Row 5 (WS): P2, *K1, P1, repeat from * to last st, P1.

Row 6 (RS): knit.

Repeat rows 5 - 6, once and work row 5 once. Bind off all stitches in ribbing pattern.

ABBREVIATIONS

K: knit

P: purl

cm: centimetres

Approx: approximately

st/sts: stitch/stitches

Rnd/rnds: round/rounds

RS: right side

WS: wrong side

pm: place marker

slm: slip marker

BOR: beginning of round marker

yo: yarn over

M1l: make one left (*insert the left-hand needle, from front to back, under the strand of yarn which runs between the stitch just worked and the next stitch on the left-hand needle. Knit this stitch through the back loop*)

M1r: make one right (*insert the left-hand needle, from back to front, under the strand of yarn which runs between the stitch just worked and the next stitch on the left-hand needle. Knit this stitch through the front loop*)

K2tog: knit 2 together

SSK: slip, slip, knit (*slip a stitch as if to knit, slip a second stitch as if to knit, insert left needle into the front of the slipped stitches and knit*)

CDD: centered double decrease (*slip 2 stitches together as if to knit, knit 1 stitch, with left hand needle pass slipped stitches over*)

Stockinette stitch: knit all stitches on right side rows and purl on wrong side rows (*in the round: knit all stitches in every round*)

DS: double stitch (*see note below*)

P_{DS}: purl on double stitch

K_{DS}: knit on double stitch

GERMAN SHORT-ROWS:

On right side rows: knit to turning point; turn and slip the first stitch purlwise with yarn in front, bring yarn over the needle to the back of work and pull tight - this creates the double stitch (DS). Bring yarn between needles to front of work to begin purling.

On wrong side rows: purl to turning point; turn and bring yarn to front between needles, slip the first stitch purlwise; bring yarn over the needle to the back of work and pull tight - this creates the double stitch (DS); begin knitting.

On following rows/rounds work DS's as single stitches, knitting or purling both legs of the DS together.

BALADA

(80% Wool, 20% Silk)

Made with Balada yarn, this petite cardigan emphasizes the comfort of wool and the delicacy of silk. The front lace contrasts with the smooth, plain knit in the back and sleeves, making it a surprisingly versatile piece.



Colour 17



PURE NEW WOOL

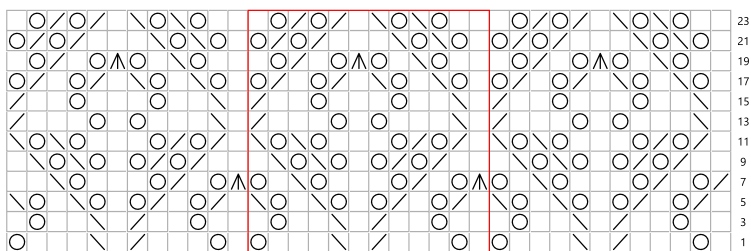


40 ANOS

CHARTS

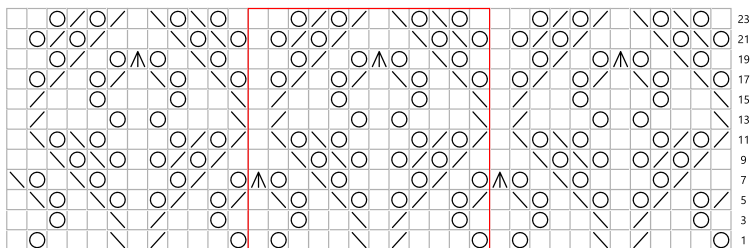
Note: only right-side rows are represented in the chart; on wrong side rows, purl all stitches.

CHART A - right front stith pattern



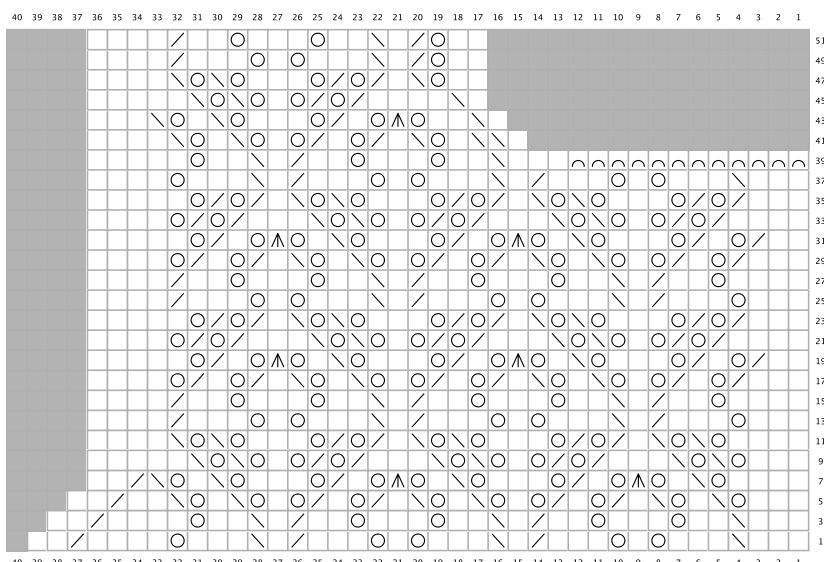
knit yo k2tog ssk central double decrease repeat: 0 (2, 3) times

CHART B - left front stith pattern



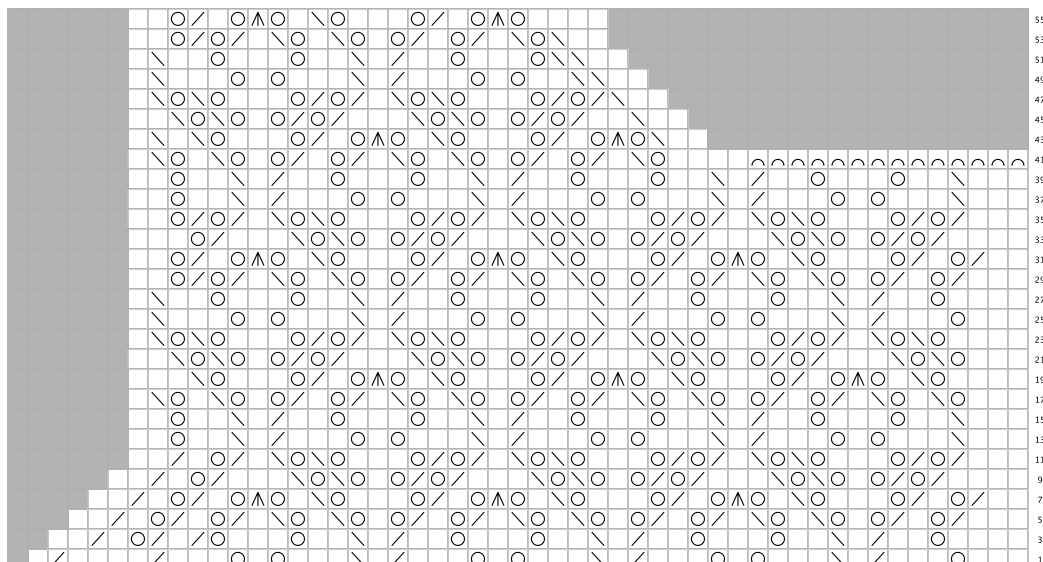
knit yo k2tog ssk central double decrease repeat: 0 (2, 3) times

CHART C - right front, size S



knit yo k2tog ssk cdd blind off no stitch

CHART D - right front, size M



knit yo k2tog ssk cdd blind off no stitch

214

Autumn . Winter



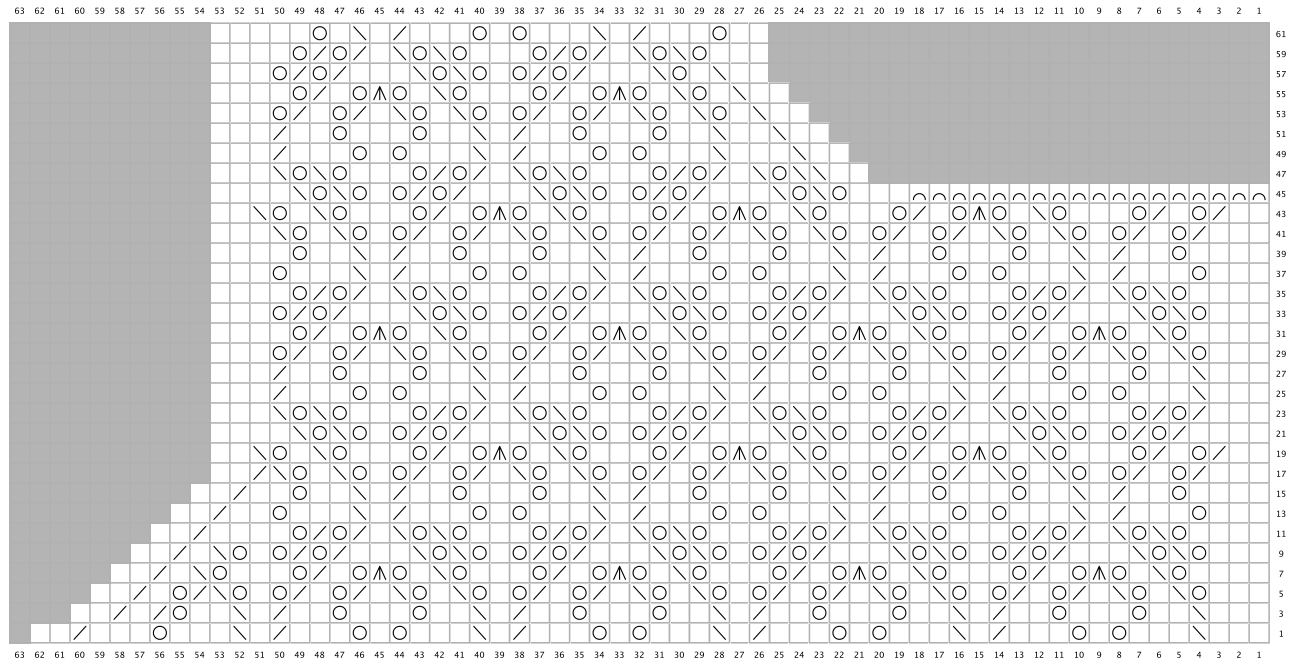
40 ANOS

Rua das Grutas, 13 - Apartado 123 - 2485-059 Mira de Aire - Portugal
 Tel. +351 244 447 300 Fax +351 244 447 309
 info@rosarios4.com www.rosarios4.com

CHARTS

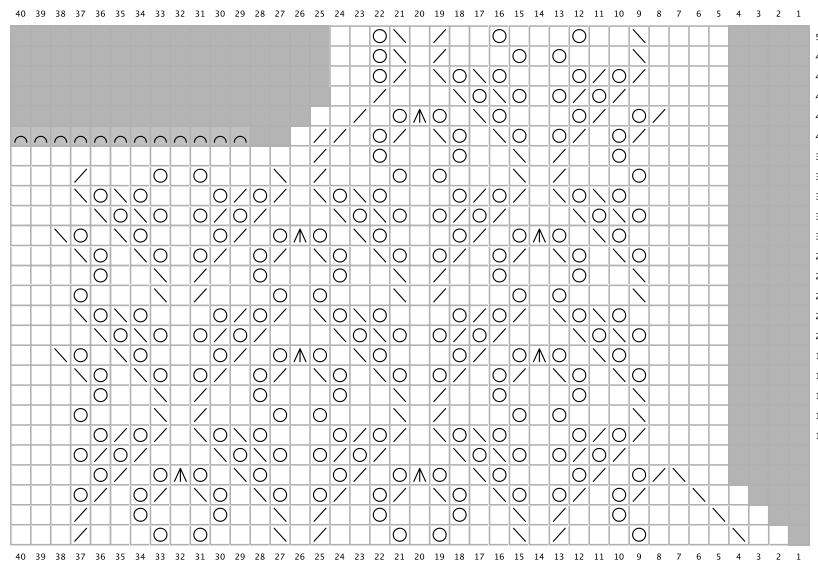
Note: only right-side rows are represented in the chart; on wrong side rows, purl all stitches.

CHART E - right front, size L



knit
 yo
 k2tog
 ssk
 cdd
 blind off
 no stitch

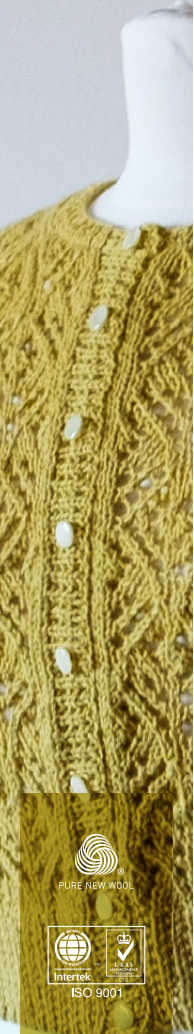
CHART F - left front, size S



knit
 yo
 k2tog
 ssk
 cdd
 row 40 (WS) - bind off 12 sts in beg of row
 no stitch

214

Autumn . Winter



PURE NEW WOOL



ISO 9001

40 ANOS

Rua das Cruzes, 13 - Apartado 123 2485-059 Mira de Aire - Portugal
 Tel. +351 244 447 300 Fax +351 244 447 309
 info@rosarios4.com www.rosarios4.com

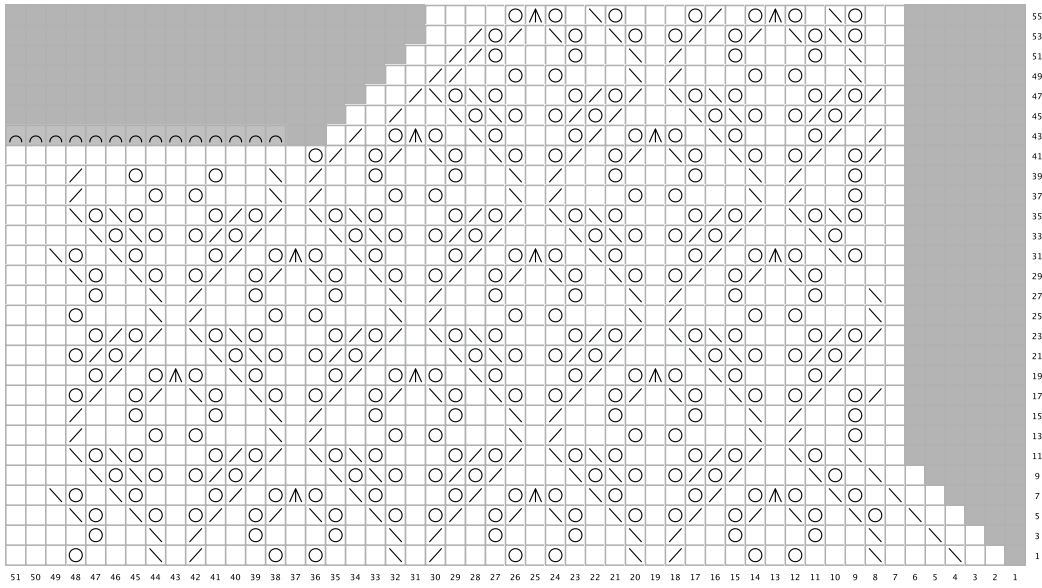
CHARTS

Note: only right-side rows are represented in the chart; on wrong side rows, purl all stitches.

214

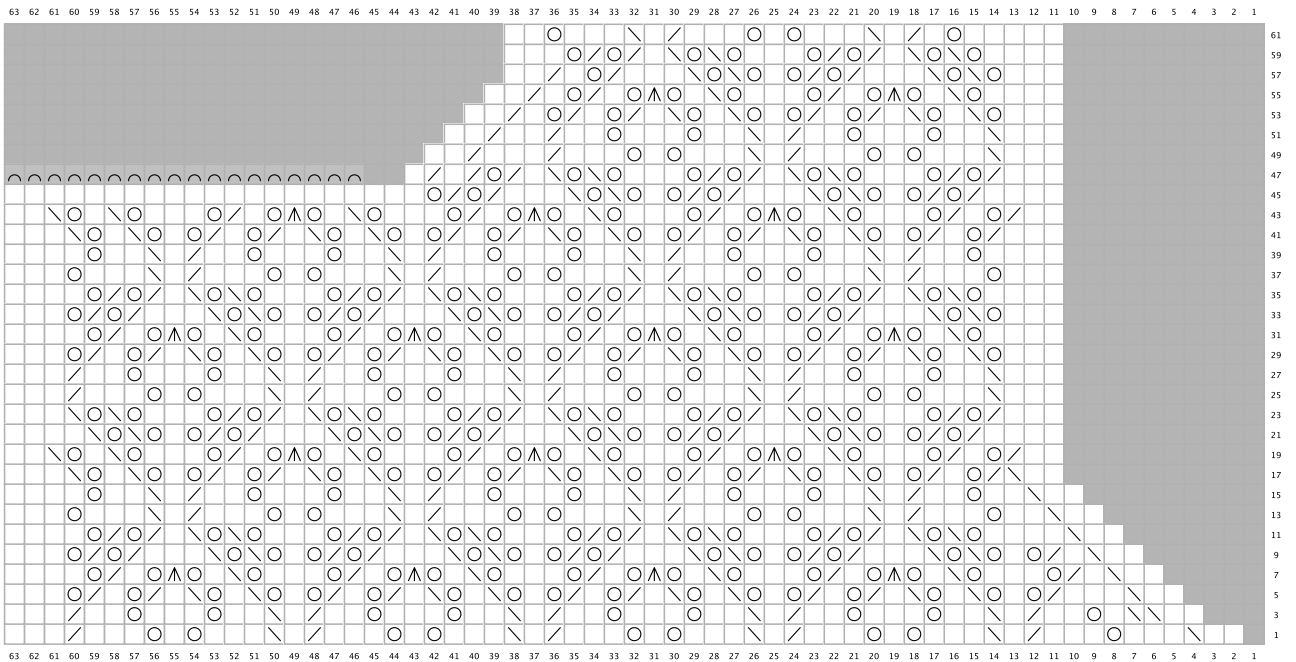
Autumn . Winter

CHART G - left front, size M



knit
 yo
 k2tog
 ssk
 cdd
 row 42 (WS) - bind off 14 sts in beg of row
 no stitch

CHART H - left front, size L



knit
 yo
 k2tog
 ssk
 cdd
 row 46 (WS) - bind off 18 sts in beg of row
 no stitch



40 ANOS

Rua das Grutas, 13 - Apartado 123 - 2485-059 Mira de Aire - Portugal
 Tel. +351 244 447 300 Fax +351 244 447 309
 info@rosarios4.com www.rosarios4.com